



A I R C R A F T

# SERVICE LETTER

## SL-AG-136

Initial Release: 07/01/2024

### Control Stick Wiring Harness Inspection

Affected Aircraft Models	Serial Number Range
All S2R	ALL

A blue ink signature of David Yarbrough, written over a horizontal line.

David Yarbrough  
Director of Engineering

## TABLE OF CONTENTS

1. PURPOSE/REASON FOR PUBLICATION .....	4
2. SCOPE/COMPLIANCE .....	4
3. HOW TO ACCESS .....	4
4. INSPECTION INSTRUCTIONS .....	5
5. REPORT .....	6
6. REPLACEMENT INSTRUCTIONS .....	6
7. COMPLIANCE .....	8

## LOG OF REVISIONS

**NOTE:** Reformatting and correction of typographical errors is not considered revision.

Rev.	Page	Description of Revision	By:
IR	All	New Document Initial Release.	T. Surratt 07/01/2024

## 1. PURPOSE/REASON FOR PUBLICATION

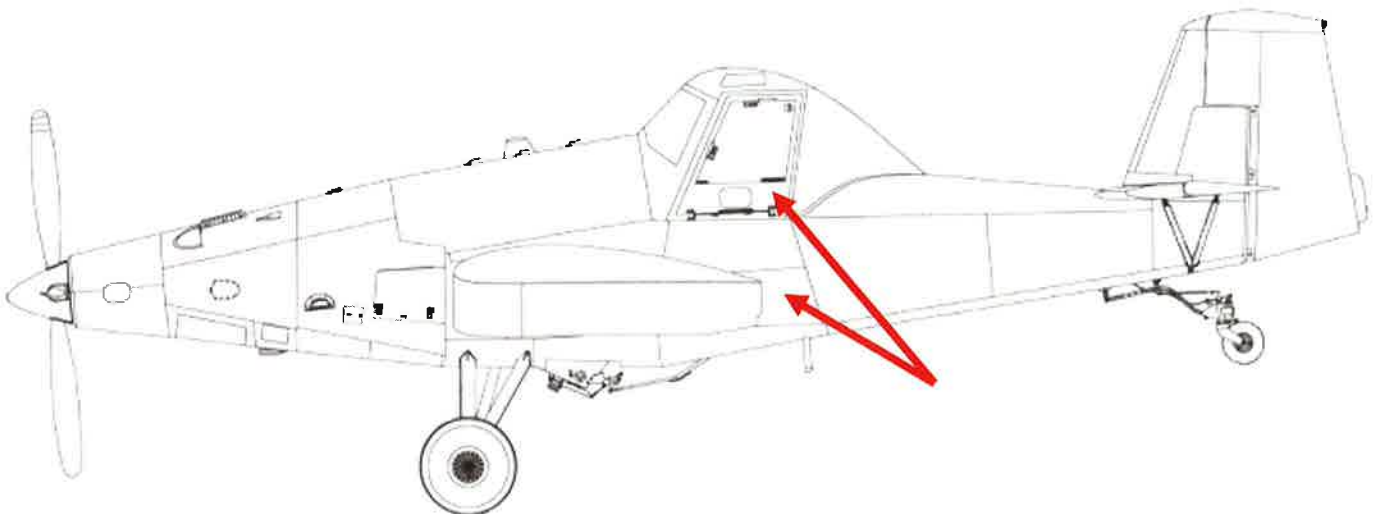
Thrush has been notified by one or more operator(s) that some of the control stick wiring harnesses have been damaged due to routing and rigging variations on installation and after some modifications and maintenance.

## 2. SCOPE/COMPLIANCE

This Service Letter contains the instructions for the inspection of the wiring harness and the next steps if damage is found, or to prevent future damage from occurring.

## 3. HOW TO ACCESS

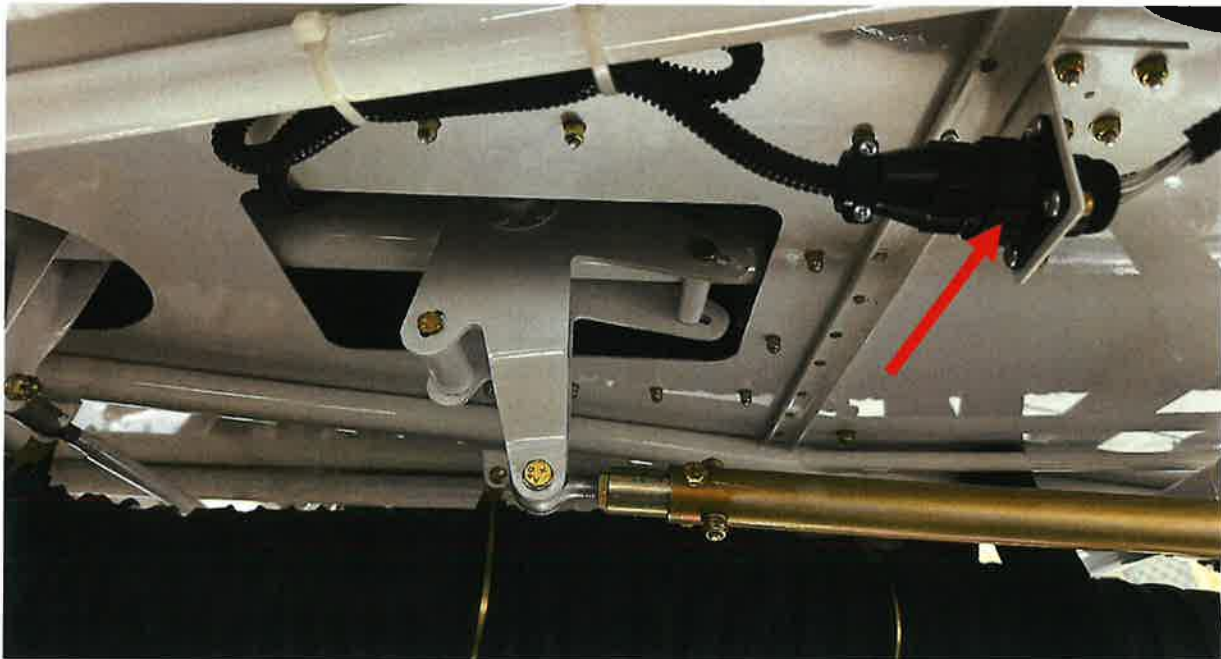
1. Enter cockpit through cockpit door for access to the control stick dust cover base. (Reference Figures 3-1 & 4-2).
2. Remove LH lower panel below cockpit and above aft wing fairing for access to the canon plug. (Reference Figures 3-1 & 4-1)



***Figure 3-1 – Single Cockpit S2R-510 Used For Reference Only***

## 4. INSPECTION INSTRUCTIONS

1. Disconnect cannon plug, located underneath the LH side of the cockpit. (Reference Figure 4-1)



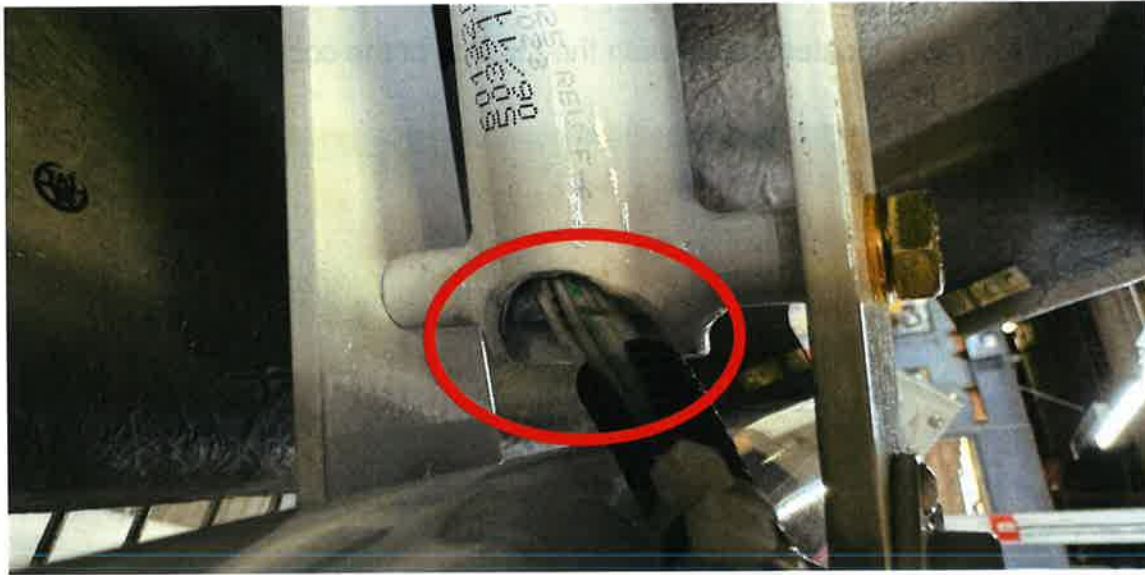
*Figure 4-1*

2. Locate and remove the screws from the control stick base within the cockpit and save for reinstallation. (Reference Figure 4-2)



*Figure 4-2*

3. Inspect the wire harness at the base of the control stick. (Reference Figure 4-3)



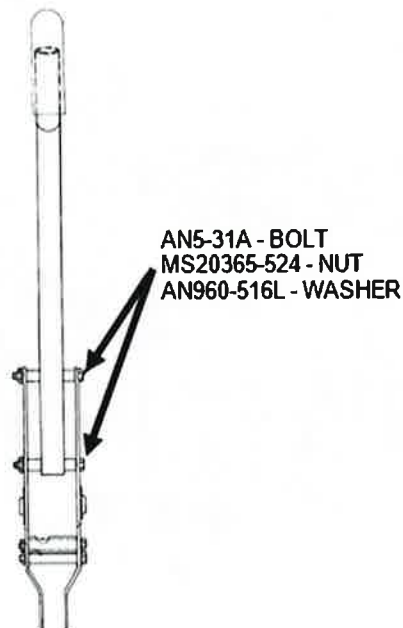
**Figure 4-3**

## 5. REPORT

If wires are damaged, notify Thrush Aircraft, LLC by sending an email to [support@thrushaircraft.com](mailto:support@thrushaircraft.com) and speak with someone about ordering a replacement control stick wiring harness.

## 6. REPLACEMENT INSTRUCTIONS

1. Remove lateral stick bolts that connect the control stick assembly to the control stick torque tube. (Reference Figure 6-1)

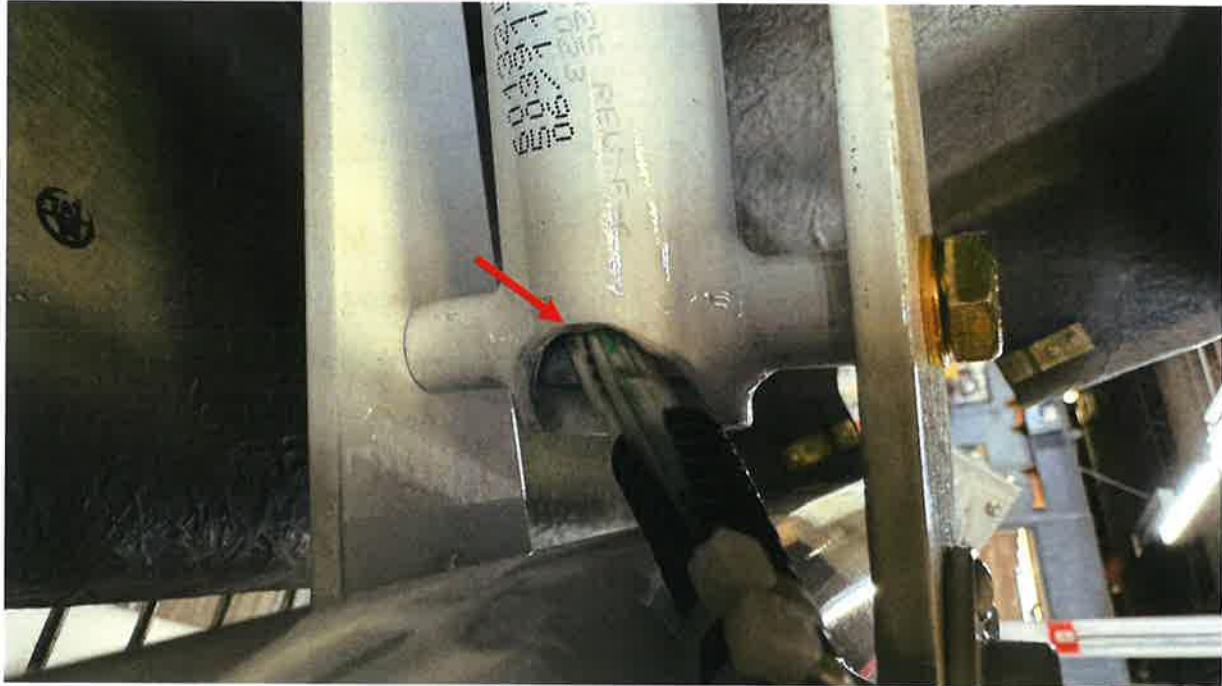


**Figure 6-1**

2. Remove the control stick grip.
3. Remove the wiring harness from the control stick.
4. Using an appropriate tool, such as a tapered rotary file, carefully remove sharp edges of control stick tube to prevent damaging wires in the future. (Reference Figure 6-2)

**\*\*\*CAUTION\*\*\***

**Remove sharp edges ONLY. Removing excess material could compromise the control stick's integrity, increasing the risk of damage that would require replacement.**



**Figure 6-2**

5. Deburr and prep area where paint was removed from trimming and grinding.
6. Refinish bare metal with appropriate primer and paint and allow to dry.
7. Install the control stick wiring harness as it was previously installed.
8. Reinstall the control stick grip.
9. Reinstall the control stick to the torque tube and retorque the bolts (100-140 inch/lbs. / 8.3 – 11.6 ft/lbs.). (Reference Figure 6-1)
10. Reroute and reconnect wiring harness canon plug. (Reference Figure 4-1)

**NOTE:** Ensure the wiring harness is routed out of the forward side of the control stick at the arched cutout as shown in Figure 6-2.

11. Check for full control stick movement in all directions no longer pinching or cutting wires.
12. Reinstall stick base with screws to floorboard. (Reference Figure 4-2)
13. Inspect the belly area and remove all foreign objects and debris (FOD).
14. Reinstall the panels that were removed.

## 7. COMPLIANCE

### Service Letter SL-AG-136 Rev. IR Compliance Report

Aircraft S/N:	Aircraft Owner:
Aircraft Registration #:	Address of Owner:
Airframe Total Time:	City & State:
Engine Total Time:	Physical Location:
Complied With By:	Date of Compliance:
Signature:	Certificate #:

**PLEASE RETURN THIS REPORT ONLY AFTER INSPECTION IS MADE**

This response card may be mailed, faxed to (229) 317-8225, or emailed to:  
[support@thrushaircraft.com](mailto:support@thrushaircraft.com)

Fold, Tape & Mail (Do Not Staple)

---

---

---

---

Return Address:

**Thrush Aircraft LLC.  
Attn: Customer Support Team  
300 Old Pretoria Road  
Albany, GA 31721**